



The Save the Bays Report

November 2004

Dredging Up Some Dirt in the Moorings Bay System

By Marilyn Tempest, President - Save the Bays

Save The Bays Association is a nonprofit organization dedicated to preserving the quality and navigability of the water in the bays inside Doctors Pass.

Board of Directors 2004

Joe Freni
Denis Healy
Dudley Herndon
Bill Kroeschell
Will Larson
Bill Lazear
Ivar Stockel
Dan Spina
Marilyn Tempest
Ed Ten Eyck
Mike Williams

Officers—2004

Chairman Emeritus – Dan Spina
President – Marilyn Tempest
Vice President – Ed Ten Eyck
Vice President – Denis Healy
Treasurer – Dudley Herndon

Email:

savethebays@aol.com

Web Site:

www.savethebays.com



This has been a summer of problems, both with the weather and in Doctors Pass and the Bays. We were very worried about boats transiting the Pass in the middle of the summer as the shoals were so high and dangerous.

As a result, an engineering company was selected to prepare an application to dredge the Pass and its approaches. This was a delayed process, but it is now proceeding. You may remember Bill Lazear's charts noting a 3 foot depth in parts of the Pass. We wanted to try to get an emergency permit to dredge, but that was not an option. On July 30 we received word that Coastal Planning and Engineering Co. had submitted the permit applications to the FL State DEP and US ACOE agencies.

Ron Pennington, the chairman of the Moorings Bay Special Taxing District Advisory Committee, copied the entire permit application on a CD and made it available to our Save The Bays officers. Information included on this CD indicated that sand had drifted over about 3 acres of hard bottom off shore south of the Pass after the last dredging operation. This sand, dredged from our Pass was to have been deposited on special sites from which it would drift onto the beaches and not affect the areas of hard bottom which are environmentally sensitive.

Later in the summer the hurricanes blew through and the winds from Charley actually helped the shoaling problem in Doctors Pass! The direction of the wind blew sand out of the Pass. Bill Lazear has prepared new charts for us. (See enclosed charts) The later

storms blew from the other direction, but we hope they were not strong enough to have a great impact. In September we received the first 'Request For Additional Information' from the Florida Department of Environmental Protection (FDEP). They did ask us to check the hard bottom areas to see if there was any plant or animal life developing on them. In late September, after Ivan blew through, a group of FDEP divers checked these sensitive and important areas and found that indeed sponges and other life forms were developing there.

Now we have altered the sites for depositing the sand to be dredged out of the Pass. We hope to be able to use these new sites. Coastal Planning and Engineering sent the response to the latest questions back to the FDEP in mid October. We hope to be given permits allowing dredging of the entire inside approaches to the Pass from Mooringline Drive Bridge on the South to Harbour Drive Bridge on the North. This might require more bottom testing and core sampling in areas not previously included in the dredging permits.

This would delay the permits by a few months, we think, but we also want the ability to dredge where needed. We expect to have the permits in place to begin dredging in the summer of 2005. It will be a long awaited event.





Report on Water Quality

November 2004

By Roz and Al Katz, Cochairs of the Water Quality Committee

During the month of June 2004, the Committee conducted water sampling in the Moorings Bay and Clam Bay system with Kathy Worley of the Conservancy. This was part of our ongoing water quality testing. In addition, we also sampled and tested for e-coli. This sampling period occurred at the end of the dry season and the next sampling is expected to occur in early Nov. just after the rainy season.

In the June period, the recap of results indicate the fecal coliform levels, as expected due to the dry season, were within State standards and did not appear to pose a health risk. The other sampling and testing generally indicate that the Bay is not too much different from the Gulf of Mexico except for a tendency for slightly higher nutrient level at the North and Southern ends of the Bay systems due to a lessened tendency for flushing from the tides. There is also the possibility of a decreasing trend in Dissolved Oxygen and Water Clarity developing and of an increasing trend in nutrient levels such as ammonia and phosphorus.

Our next sampling/testing this month will take another hard look at these possible trends. During the summer the Water Quality Committee investigated several other items that could have an effect on the Bay.

We met with representatives from the Venetian Village/The Lutgert Companies, who were very helpful and informative as to the filter baskets they have placed in the storm drains in the parking lots of the Village. Specially designed filter boxes have been placed in approximately 38 storm water inlets and the filter medium is changed out twice a year by a company out of Tampa for the Lutgert Companies.

We know that there are about 80 drain pipes emptying storm water into the Bays but we really don't know how many storm water inlets empty into these 80 pipes. All in all, it would be quite an expensive

proposition to have filter baskets installed in all the drains connecting to these 80 pipes.

We have been in touch with a company out of Pinellas Park, Fl. that has installed water movement pumps in some of the canals in Aqualane Shore. The purpose of this meeting was to explore the possibility of installing aerators in the North and south end of the Bay, Banyan and Seagate, in an attempt to improve the water quality in those areas that we have seen by our analysis don't get as much flushing and therefore exhibit poorer water quality than the rest of the Bay system. We expect to get a written report and some financial costs in the very near future.



Finally, we have taken note of another very recent phenomenon in the Chesapeake Bay that could provide some insight into the water quality of the Moorings Bay System. This experience is the appearance of a small, native mollusk in very large quantities in the Magothy River, a Chesapeake Bay tributary. This mollusk has

increased in quantity, it is believed, as a result of the increase in fresh water from last year's Hurricane Isabel. One of the dramatic results of the larger number of mollusks is a considerable increase in the water clarity in this river as compared to the Bay as a whole.

The mollusk filters about one coffee cup of water per hour which is a fraction of the several gallons an hour that a native oyster can filter. By introducing more oysters into the Moorings Bay System, it is quite possible that water clarity could be increased which could then increase the quantity of sea grasses that could grow which could increase the habitat for many other aquatic species.

CALLING ALL VOLUNTEERS



You are most welcome to join our committees. Just drop us a note to our P.O. Box 1593 -- or our Email address: savethebays@aol.com and tell us of your interests. We always welcome your help! Our committees work on water

quality, water depths, trash collection in the bays, lawns and gardens, navigation aids and boating safety, printing and mailing our Reports to Members, and our treasurer always could use help. These are not highly time consuming

activities – just interesting and helpful to residents and members. So get involved with Save The Bays and join our active group!

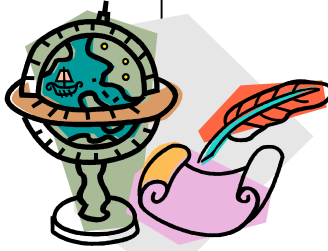


Charting the Waters of Moorings Bay System

November 2004

By Bill Lazear - Chartmaker Extraordinaire

The depths in the Doctors Pass Channel have been affected by the recent hurricane winds and waves. The 3' reef that developed between Marker G"1" and the north breakwater was reduced by the SW winds of Charley, but has partially returned after Frances' NW winds. Caution is needed between G"1" and G"3".



We try to show the most recent charts. We have made four surveys in the last three months, trying to keep up with the changes.

The new Shoal Markers warn of growing 3' shoals. The Moorings Bay Shoal extends south to the new shoal marker. The new marker in the Pass near Admiralty warns of a 3' shoal on the north side, west of G"7".

Entering the Pass the best course is near the midline. Consult the charts posted on our web site, <http://SaveTheBays.com>.

A Note from the President

Welcome back to our seasonal residents and all our friends of Save The Bays! As the season begins to get busy and more boats transit Doctors Pass, we are happy to report that one of the summer hurricanes actually helped our Pass!

However, some shoals remain.

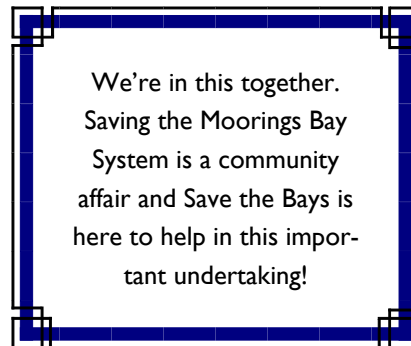
New warning signs have been installed, and we highly recommend that all boaters check Bill Lazear's charts in this Report and on our Web Site to acquaint themselves with the local conditions.



This summer saw the much delayed application for Permits to dredge Doctors Pass and the approaches finally submitted to the Florida Department of Environmental Protection and the Army Corps of Engineers by Coastal Planning and Engineering Co., the company hired by the City of Naples to direct the project. The City of Naples was very slow to select the engineering company and commence the project, much to our dismay. The Pass was getting very dangerous with building shoals. But Hurricane Charley helped us. We expect the dredging of the Pass to occur next summer. This process moves so slowly through the various State agencies. The environmental concerns are uppermost in this process -- where we put the sand we remove and how we protect plant and animal life.

Save The Bays has some interesting projects under consideration for improving the waters in our Bays. We hope to improve our dissolved oxygen at the extremes of our bay system and find a way to filter our waters. We've looked into inserting filters into our storm water drainage pipes and found that far too expensive. But Florida Gulf Coast University Department of Marine Sciences has some ideas for us. We hope to develop a study-related project with FGCU that will be beneficial and affordable.

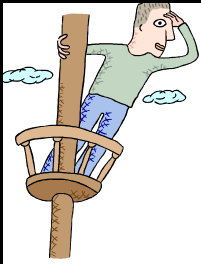
We always welcome ideas from our members and encourage you to become active in our organization. We can use help on our committees and with our mailings. Contact any of us if you would enjoy a more active role in Save The Bays!



This is our issue to ask for your contributions. We ask for a minimum contribution of \$10 per year, but happily accept larger amounts! We use your contributions, which are tax deductible, to test our water, repair our tide gauges (an ongoing task), fund our projects and prepare and mail Reports to Members.

We need your correct mailing information to be sure you receive our Reports. Please make your contributions and complete the accompanying form.

Thank you for your support!



THE VIEW FROM THE CATBIRD SEAT

By Dan Spina, Chairman Emeritus

It is my privilege to focus on a few short "News Notes" which I feel are important to our members.

1) **WEB SITE:** We are very fortunate to have Ed Ten Eyck design and maintain our Web Site. If you have a computer I suggest you get on this site frequently and develop a friendship with it. It is easy. It is loaded with good information. For example, there are charts of Doctors Pass and Approaches after the hurricanes. How else could we give them to you? Please look at the "News" and the "Dredging" section often. They are priceless!

2) **TIDE GAUGES:** It is good seamanship to use a tide gauge when you use the Pass. Check the gauge and calculate the depth of the water, under you, as you enter or leave the Pass. In this way you will know the water depth and course for a safe passage. We have a new gauge at Marker 5. It is protected from the rough seas. It may be stuck because of a binding. Be careful about it. The gauge at the Doctors Pass (DP) tower is going to be replaced. The gauge gives you the number of feet above or below MLLW (Mean Low Lower Water) at the time you read it. Add or subtract the gauge number to the numbers on the chart (soundings). That is the water depth at that place at that time. Please call me at 261-6824 if you need more explanation.

3) **SURFACE TRASH:** At long last, the City has a Documented Policy for regular removal of surface trash and for special trash removal situations. You or your condo manager should try to

remove easy trash if possible. If you see that trash needs attention, please call David Lykins, Community Services Director, at 213-7120. After hours call 216-0062. The policy is found on the Web Site. It really depends on calls from our residents to be effective.

4) **LOCAL KNOWLEDGE:** We know that there are shoals in Doctors Pass and approaches. They will not be removed until next year. The City has very nicely installed caution signs which say: WARNING! Shifting Shoals in Pass and Approaches, Local Knowledge Required, Navigate with Care, Use Depth Sounder". This tells it all! I have four 11x17 inch charts showing where shoals are or were. They are not for navigation. They are a good form of Local Knowledge. Deep draft vessels should welcome them. If there are swells, such vessels may hit hard and break a strut or damage the prop and shaft. I will be glad to give you a set of charts. Please call 261-6824. I hope to have Boat US, West Marine and Boaters World have them for their customers.

5) **WE ARE LATE IN OUR DREDGING:** It would take a full page story to explain why dredging was not initiated a year or two ago. It is long process to obtain two permits. A Professional Engineer does the work. Bid documents and contracts are required. We hope the City Attorney's office will no longer insist on employing the "low bidder" and will also ensure, in the contract, that the contractor begins his work in time much before winter storms stop or delay him.

6) **OUR CHARTS ARE PRICELESS!** Bill Lazear has developed a precision method for determining water depth and plotting the location. The method is used by NOAA and the US Power Squadron. We are much indebted to Bill. The work that STB does clearly helps maintain our property values.

Hear ye! Hear Ye! Hear Ye!

ARE YOU TAKING ADVANTAGE OF OUR WEB SITE?

By Ed TenEyck - Webmaster

There are many things on our Web Site that you might find both interesting and beneficial. It has been designed for our Members to provide answers to a wide variety of questions. Here are some examples:

- Interested in the quality of water in our Bays? A recent report by Kathy Worley of the Conservancy summarizes data collected by Save The Bays during the past ten years.



- Noticed that the water depth in our channels is getting shallower and wonder what is being done about it? Latest depth

charts of Moorings Bay and Doctors Pass prepared by Bill Lazear can be viewed. The status of plans to dredge the Pass and Bay are covered.

- Looking for the nest of our Eagles? A map of the location can be seen. Watch but please do not disturb them.
- Going fishing or taking your boat through the Pass and would like to know what the tide level will be? A graphical chart with numerical levels for high and low tide will give you the information for a whole month. This unique chart provided by Bill Lazear can be printed on one page and put aboard your boat or in your tackle box.
- Noticed that your sea wall looks a bit tired and want to find out what can be done about it? Repairs completed by others can be viewed along with a description of how sea walls are constructed and how they fail. An understanding of this could save you real money.
- Notice trash floating in the Bay near your dock and wonder how to get rid of it? The City Policy on trash removal is reviewed along with the phone number to call to get action on the problem.

These are examples – there is much more. Come visit the Web Site at

www.SaveTheBays.com